

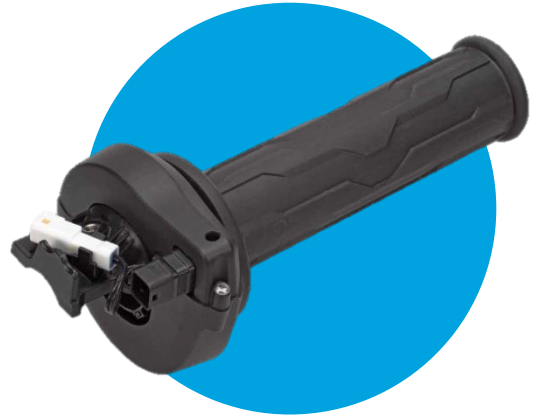
Fast Facts

Electronic Hand Throttle High demand for flexibility

The electronic hand-throttle is, a direct communication interface with the driver. An integrated sensor indicates the position of the electronic throttle grip at all times.

This information is transferred from the sensor to the control unit in real time and accurately. The control unit communicates with an actuator at the throttle-flap, which will open or close according to the sensor signal.

Multiple other functions like heating system or cruise control switch off are available.



Electronic hand throttles by KYOCERA AVX Components (Werne) are distinguished by their electronic design and high flexibility in special customer applications. Our electronic hand throttles are proven on the market and are in series production for market leading OEM's.

Innovativeness and experience

- Since 2010 supplying electronic hand throttle controls
- High robustness against external magnetic fields
- Possibility of ASIL C if required

Typical features and benefits

- Contactless sensor technology (based on Hall or inductive technology)
- 5V supply voltage
- Two independent output signals
- Output signal programmable
- Low weight
- High reliability
- High protection level