

## Fast Facts

### 6.6kW On Board Charger (OBC) – liquid cooled 3.3kW OBC – air cooled

6.6kW OBC – liquid cooled: with Gallium Nitride semiconductors  
3.3kW OBC – air cooled, same footprint like 6.6kW

#### Input/General Characteristics (AC)

- Input Voltage: 85VAC – 264VAC
- Input Current:  $\leq 32A$
- Frequency Range: 49 – 61 Hz
- Efficiency: 96%
- Power Factor:  $>0.99$
- THD:  $<3\%$
- Size: 250 x 175 x 71 mm

#### Also available:

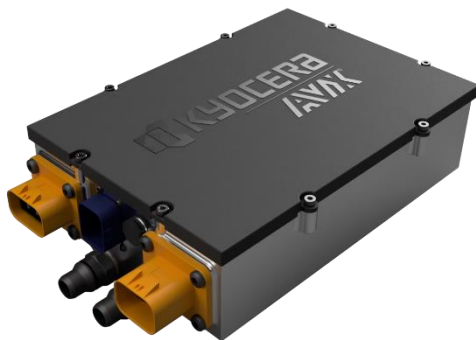
- 3.3kW OBC liquid cooled – 200 x 175 x 71 mm
- 11kW OBC liquid cooled – 250 x 225 x 71 mm

#### Output Characteristics (DC)

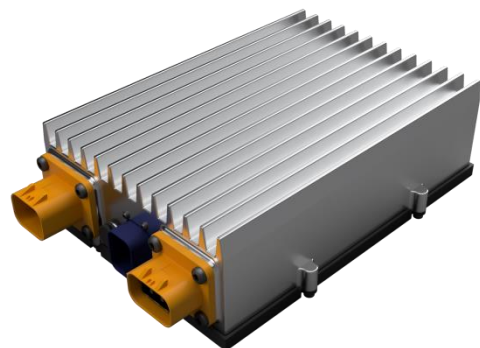
- Output Power: 6.6kW / 3.3kW
- Output Voltage: 150-420VDC
- Output Current:  $\leq 20A$  /  $\leq 10A$

#### Communication & Auxiliary

- EVSE communication (CP/PP): according to SAEJ1772 and IEC 61851
- Vehicle communication: CAN 2.0B / CAN-FD
- Auxiliary supply: 12VDC, 2A



6.6kW - liquid cooled



3.3kW - air cooled

