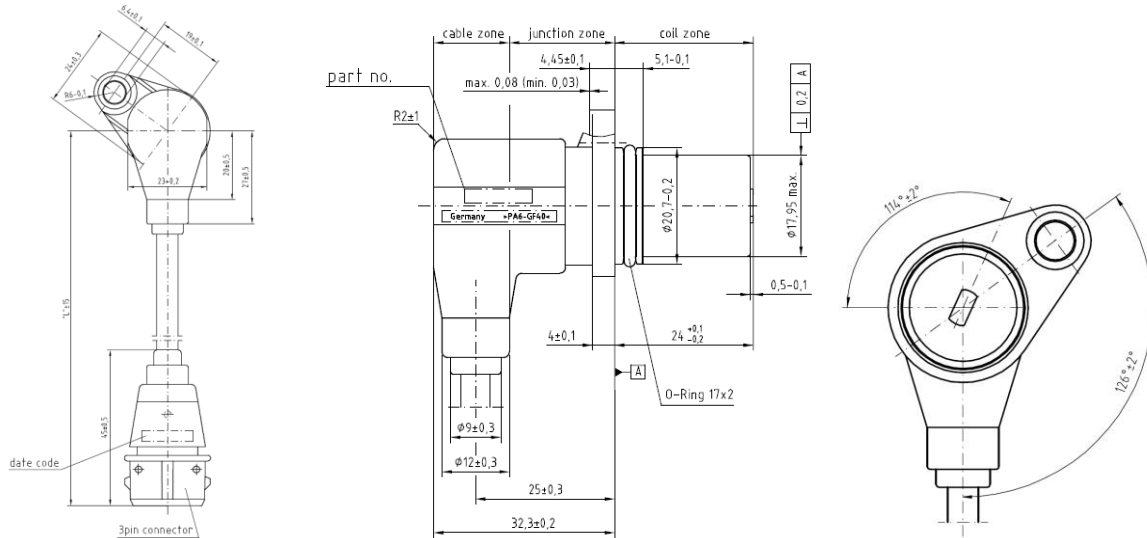


Speed Sensor (Inductive)

94349 00010 / 30

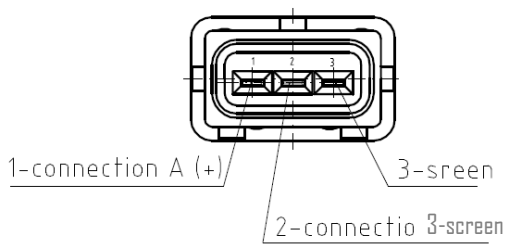


Dimensions

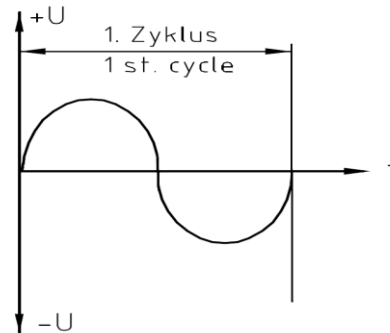


Resistance	530 Ω ± 15 %	Inductivity	0.25 H ± 10 %	Signal sequence	On connection 1 (+) 1. half wave positive
Temperature range	-40 °C to +130 °C (150 °C/ 1 h)	Mounting hole	Ø 18 mm Ø 20.9 H8 (O-Ringber.)	Shaft length	24 +0.1 / - 0.2 mm
Connector	3 pin Mini-Timer, female connector on request	Cable lenth "L"	740 ± 15 mm (..00010) 900 ± 20 mm (..00030)		

Connector



Output Signal



Technical status acc. to specification